

HOLES SIZED FOR 1/4-20 THREAD-FORMING SCREW
 NOTE: THREAD SEALANT MUST BE APPLIED TO SCREW THREADS IF SCREWS ARE REMOVED OR REPLACED.

APPROXIMATE WEIGHT: 32.7 KG [72 LBS]

200A SERVICE ENTRANCE
 MPAC 500 CONTROLLER
 NEMA 3R ENCLOSURE

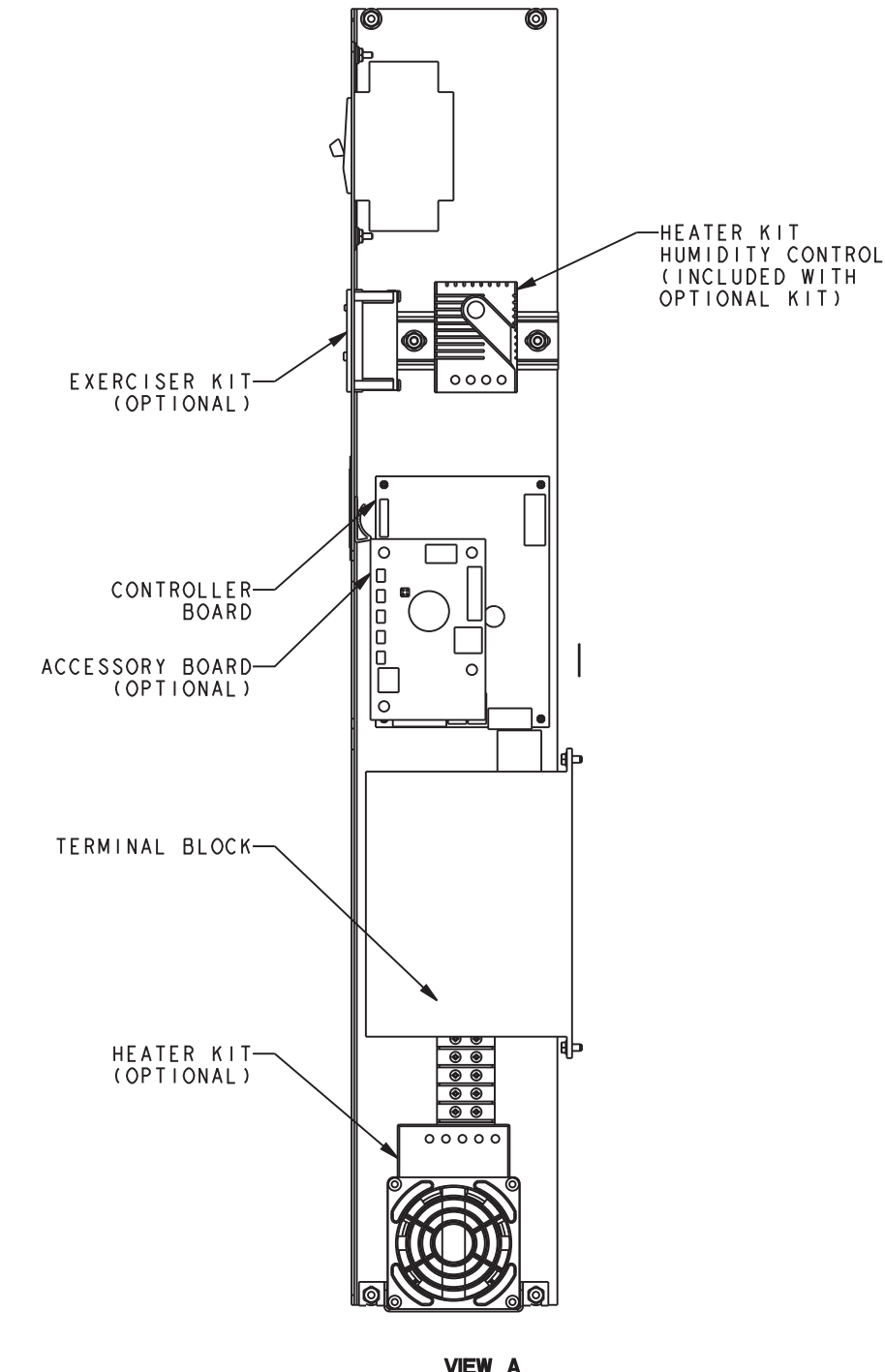
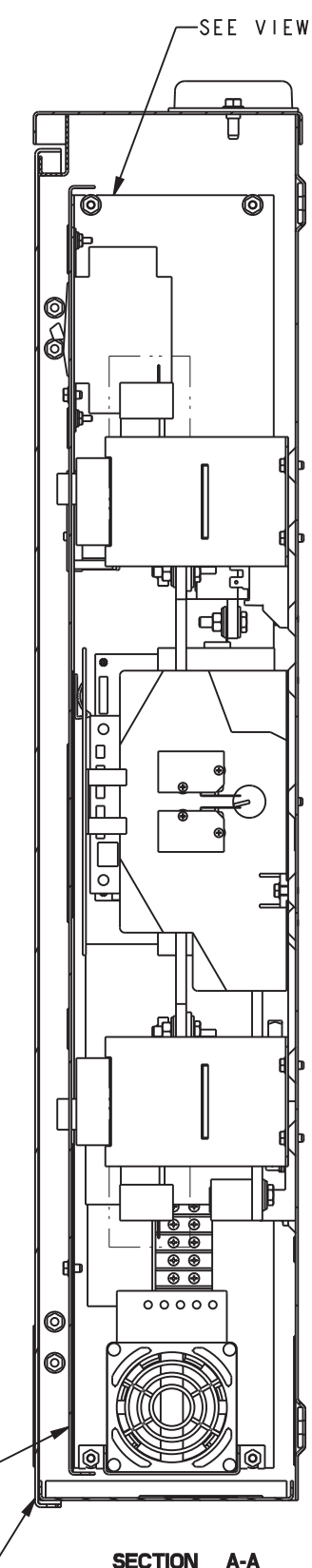
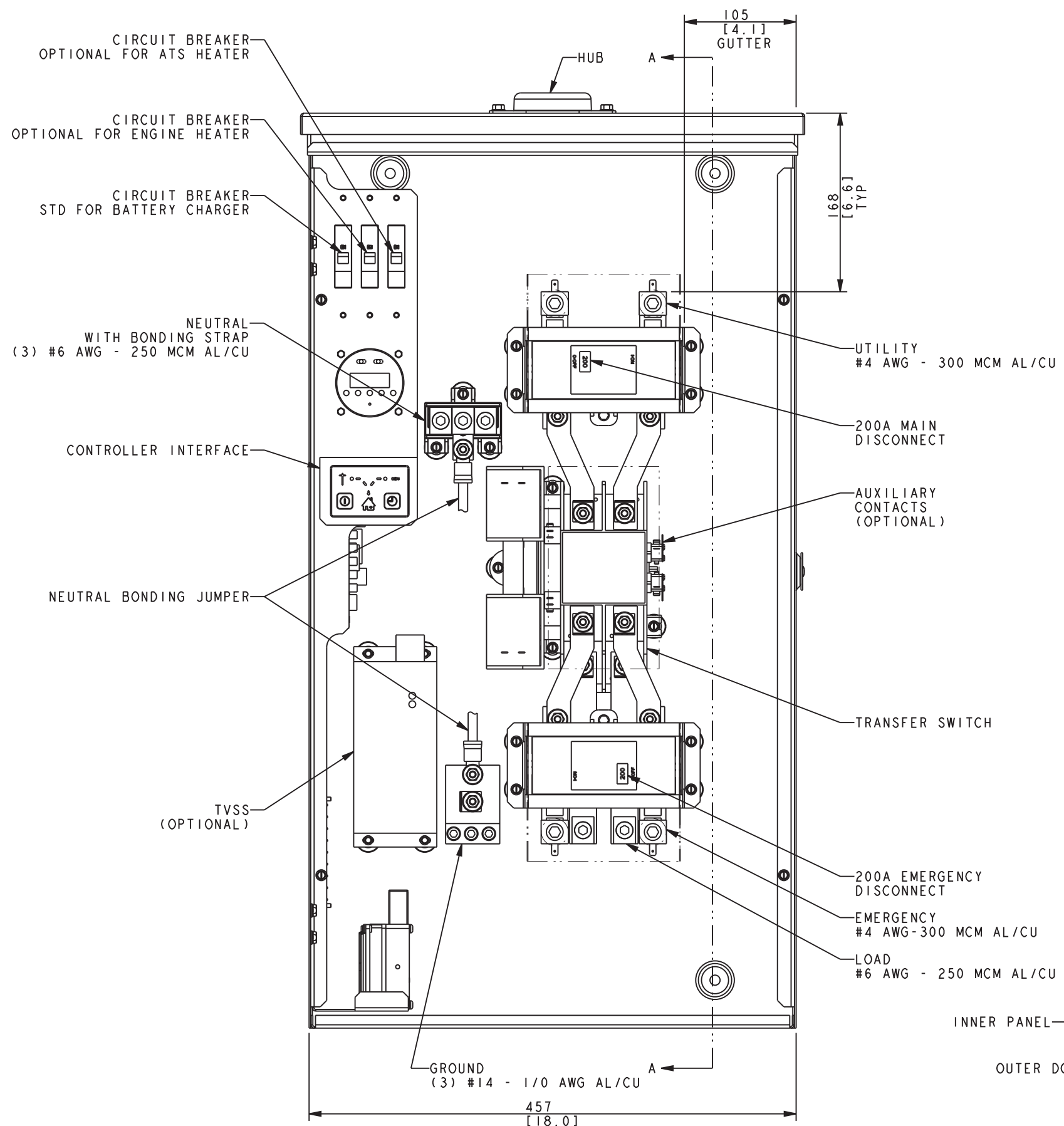
| REV | DATE | REVISION | BY |
|-----|----------|---------------------|-----|
| - | 8-7-06 | NEW DRAWING [80761] | WSD |
| A | 10-30-08 | SEE SHEET 2 [86322] | WSD |
| B | 11-8-10 | SEE SHEET 2 [90503] | BTW |
| C | 1-28-11 | SEE SHEET 2 [91033] | BTW |

| | |
|--------------|--------|
| APPROVALS | DATE |
| DRAWN WSD | 8-7-06 |
| CHECKED WSD | 8-7-06 |
| APPROVED AJH | 8-7-06 |

KOHLER CO. METRIC PRO-E
 POWER SYSTEMS, KOHLER, WI 53044 U.S.A.
 THIS DRAWING IN DESIGN AND DETAIL IS KOHLER CO. PROPERTY AND MUST NOT BE USED EXCEPT IN CONNECTION WITH KOHLER CO. WORK. ALL RIGHTS OF DESIGN OR INVENTION ARE RESERVED.

TITLE: **DIMENSION PRINT**

SCALE: CAD NO. SHEET 1 of 2
 DWG NO. **ADV-7185** **D**



INNER PANEL & DOOR NOT SHOWN

200A SERVICE ENTRANCE
MPAC 500 CONTROLLER
NEMA 3R ENCLOSURE

SERVICE DISCONNECT BREAKERS ARE 200A 80% RATED.
CONTINUOUS LOAD CURRENT IS NOT TO EXCEED 80% OF
BREAKER RATING.

| REV | DATE | REVISION | BY | UNLESS OTHERWISE SPECIFIED - 1) DIMENSIONS ARE IN MILLIMETERS 2) TOLERANCES ARE: |
|-----|----------|---|-----|--|
| - | 8-7-06 | NEW DRAWING [80761] | WSD | |
| A | 10-30-08 | (B-7) BONDING JUMPER NOTE ADDED; (D-1) HUMIDITY WAS TEMPERATURE & HUMIDITY; (A-1) BREAKER RATING NOTE ADDED [86322] | WSD | |
| B | 11-15-10 | (C-8) NEUTRAL BONDING JUMPER NOTE UPDATED; [90503] | BTW | |
| C | 1-28-11 | (B-7) TVSS VIEW UPDATED; [91033] | BTW | |

| | | | |
|-----------|------------|---------|--|
| APPROVALS | DATE | | KOHLER CO. METRIC PRO-E POWER SYSTEMS, KOHLER, WI 53044 U.S.A. THIS DRAWING IN DESIGN AND DETAIL IS KOHLER CO. PROPERTY AND MUST NOT BE USED EXCEPT IN CONNECTION WITH KOHLER CO. WORK. ALL RIGHTS OF DESIGN OR INVENTION ARE RESERVED. |
| BTW | WSD 8-7-06 | | |
| BTW | WSD 8-7-06 | | |
| CHECKED | WSD 8-7-06 | TITLE | DIMENSION PRINT |
| APPROVED | AJH 8-7-06 | SCALE | CAD NO. |
| | | DRG NO. | ADV-7185 |